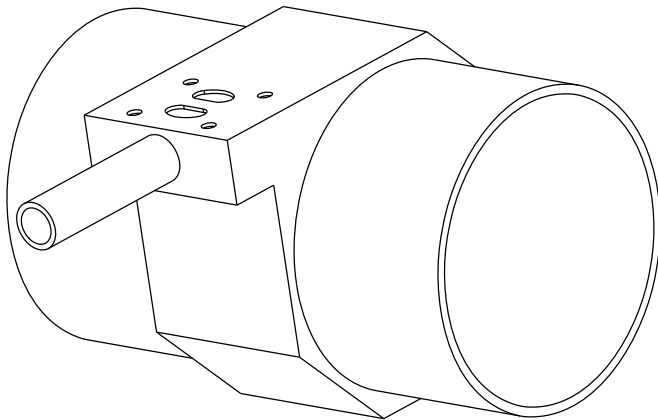
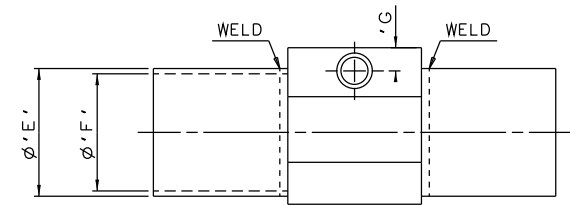
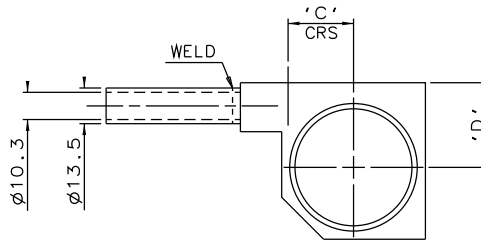
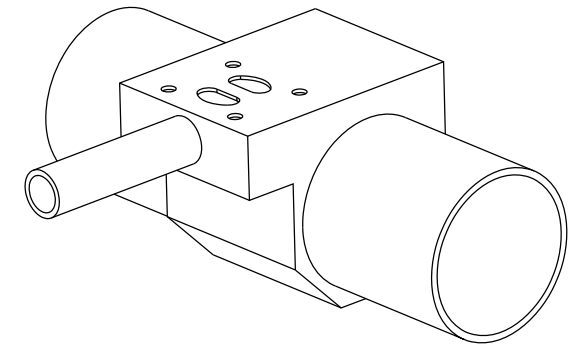
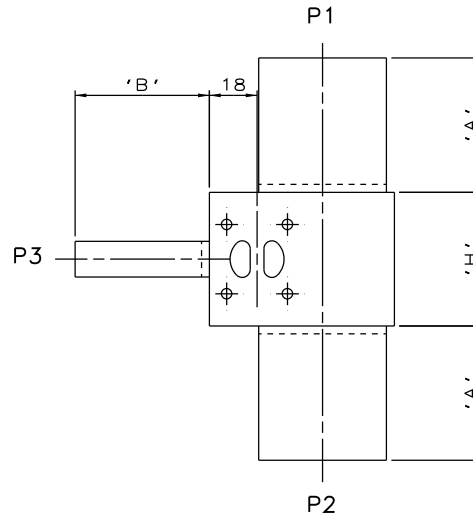


DN8 MAINLINE ONLY

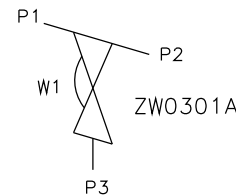


DN65 TO DN100
MAINLINE ONLY



DN10 TO DN50
MAINLINE ONLY

| MAINLINE SIZE mm | A mm | B mm | C mm | D mm | ϕE mm | ϕF mm | G mm | H mm | BODY WEIGHT Kgs |
|---------------------|---------|---------|---------|---------|----------------|----------------|---------|---------|--------------------|
| DN8 | 50.8 | 50.8 | 7.8 | 17.5 | 13.5 | 10.3 | 8.8 | 37.0 | 0.3 |
| DN10 | 50.8 | 50.8 | 9.6 | 20.0 | 17.2 | 14.0 | 8.8 | 37.0 | 0.3 |
| DN15 | 50.8 | 50.8 | 11.7 | 22.0 | 21.3 | 18.1 | 8.8 | 37.0 | 0.4 |
| DN20 | 50.8 | 50.8 | 14.5 | 24.6 | 26.9 | 23.7 | 8.8 | 37.0 | 0.4 |
| DN25 | 50.8 | 50.8 | 17.2 | 27.0 | 33.7 | 29.7 | 8.8 | 50.5 | 0.7 |
| DN32 | 50.8 | 50.8 | 21.8 | 30.0 | 42.4 | 38.4 | 8.8 | 50.5 | 0.9 |
| DN40 | 50.8 | 50.8 | 24.8 | 32.0 | 48.3 | 44.3 | 8.8 | 50.5 | 0.9 |
| DN50 | 50.8 | 50.8 | 30.2 | 35.0 | 60.3 | 55.1 | 8.8 | 50.5 | 1.3 |
| DN65 | 50.8 | 50.8 | 38.1 | 40.0 | 76.1 | 70.9 | 8.8 | 50.5 | 1.4 |
| DN80 | 50.8 | 50.8 | 44.5 | 48.0 | 88.9 | 83.7 | 8.8 | 50.5 | 1.7 |
| DN100 | 101.6 | 50.8 | 57.2 | 60.0 | 114.3 | 109.1 | 8.8 | 50.5 | 2.8 |



ORIENTATION AS PER
P&ID DIAGRAM FOR
OPTIMUM DRAINABILITY.

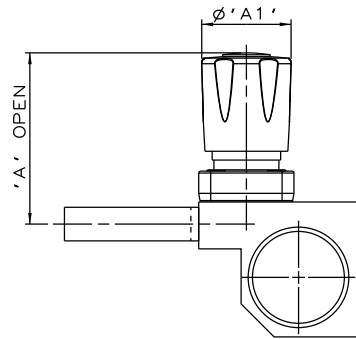
The information on this sheet is Private and Confidential and is the property of Crane Process Flow Technologies Limited and must not be published directly or indirectly in any manner whatsoever without the written permission of the Company and must not be used in any way detrimental to their interests.
© Crane Process Flow Technologies

CRANE Process Flow Technologies
A Crane Co. Company

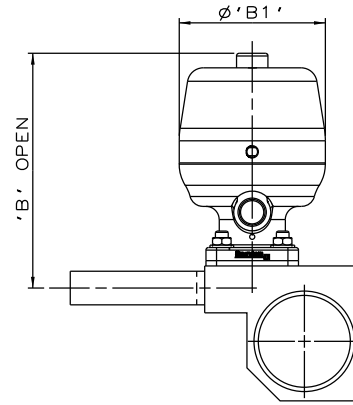
Saunders
The Science Inside

Title
SCHEDULE OF LEADING DIMENSIONS FOR DN8 WEIR
'T' BODY WITH ISO 1127 S1 BUTT WELD ENDS

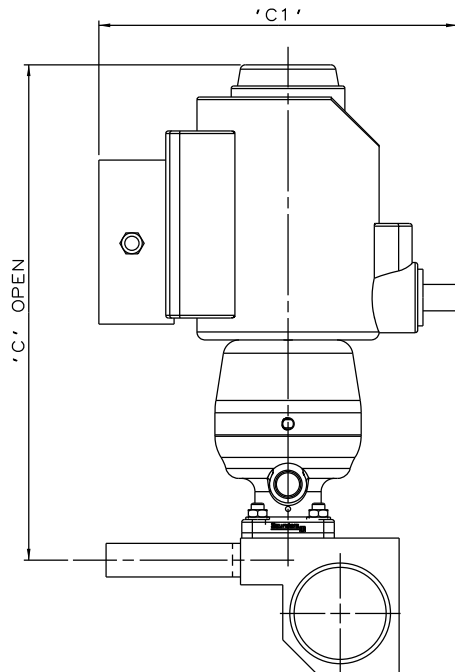
| | | | |
|---------------------------------------|---------------|-------------------------------------|------------------------|
| Drawn JRD | Date 13.10.11 | UNCONTROLLED IN HARD COPY FORMAT | |
| Checked RND | Date 22.03.12 | | |
| First Angle Projection Method E | | DO NOT SCALE | Drawing No. WEB-073 |
| | | | Issue. 2 |



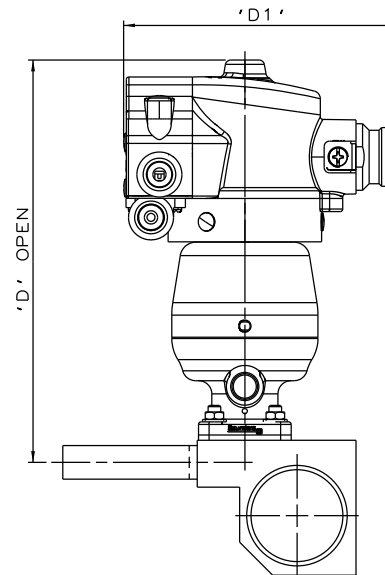
PURE PERFORMANCE
BONNET ASSEMBLY



*S360 ACTUATOR



*S360 ACTUATOR
WITH I-VUE SENSOR



*S360 ACTUATOR
WITH M-VUE SENSOR

The information on this sheet is Private and Confidential and is the property of Crane Process Flow Technologies Limited and must not be published directly or indirectly in any manner whatsoever without the written permission of the Company and must not be used in any way detrimental to their interests.
© Crane Process Flow Technologies

CRANE Process Flow Technologies
A Crane Co. Company

Saunders
The Science Inside

Title
SCHEDULE OF LEADING DIMENSIONS FOR DN8/0.25 WEIR
'T' BODY (DN8/0.25 BRANCH) WITH BUTT WELD ISO 1127 S1 ENDS.
FITTED WITH TOPWORKS OPTIONS

| | | | |
|---------------------------------------|--------------------|-------------------------------------|-------------|
| Drawn R1 | Date 09.05.17 | UNCONTROLLED IN HARD COPY FORMAT | |
| Checked RND | Date 09.05.17 | | |
| First Angle Projection Method E | DO NOT SCALE | Drawing No. WEB-073-ASSY | Issue. 1 |

* DIMENSIONS SHOW MAXIMUM ENVELOPE FOR ALL MODES

| BRANCH SIZE | | A | | A1 | | B | | B1 | | C | | C1 | | D | | D1 | |
|-------------|------|------|------|------|------|------|------|------|------|-------|------|-------|------|-------|------|-------|------|
| mm | inch | mm | inch | mm | inch | mm | inch | mm | inch | mm | inch | mm | inch | mm | inch | mm | inch |
| DN8 | 0.25 | 65.2 | 2.57 | 34.0 | 1.34 | 88.8 | 3.50 | 55.0 | 2.18 | 187.8 | 7.39 | 136.0 | 5.35 | 153.8 | 6.06 | 103.8 | 4.09 |